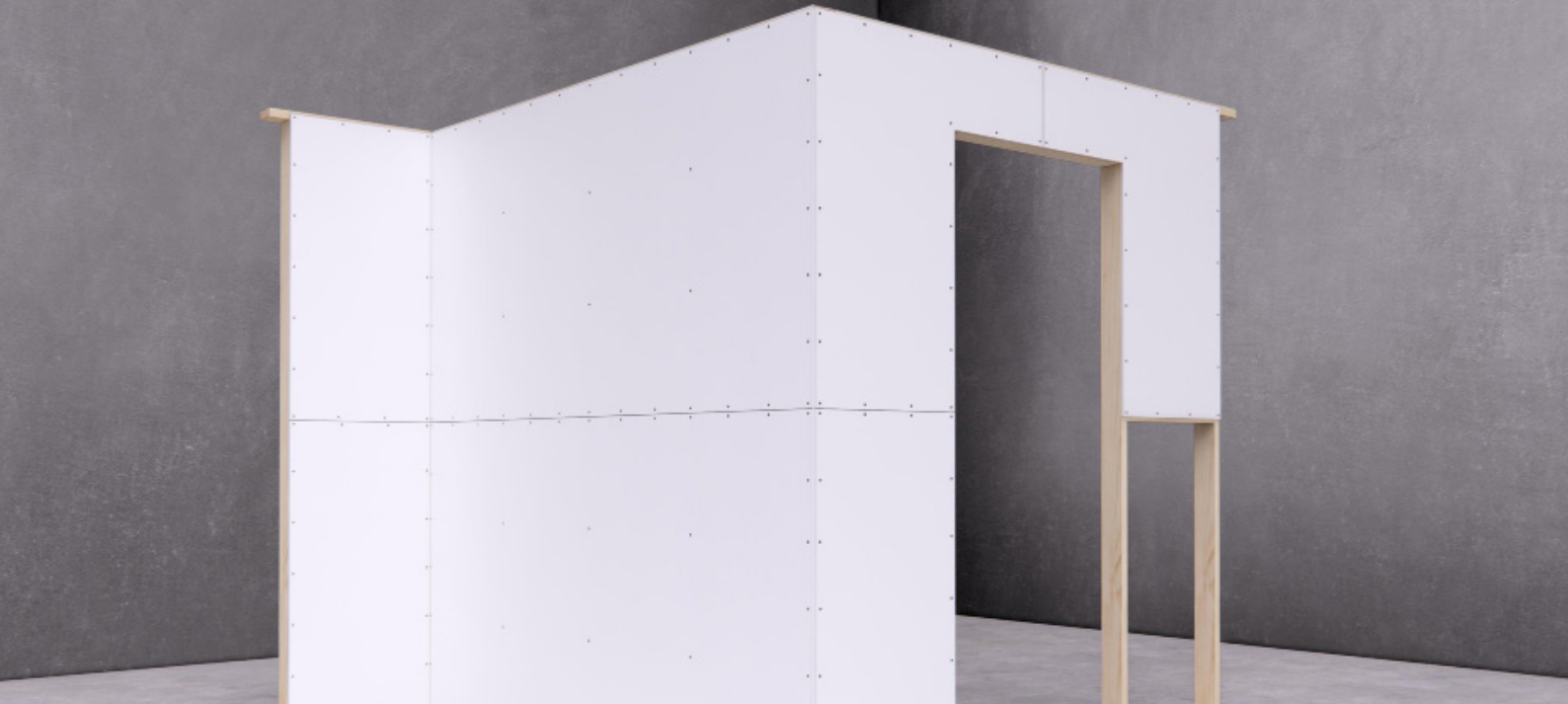


IMPAX

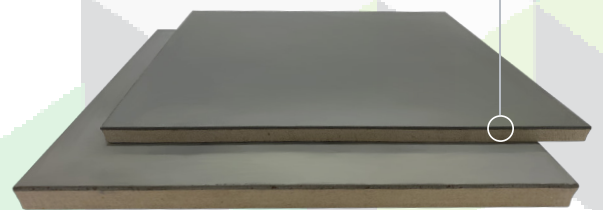
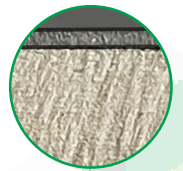
SECURITY BOARD



AUSTRALIA'S LEADING SECURITY BOARD

Guardian's IMPAX Security Board is Australia's leading vandal and impact resistant, steel lined fibre cement product. Zincaneal is laminated to a fibre cement sheet, suitable for walls and ceilings and can be fixed to timber or steel framing. The performance, strength and integrity of IMPAX can be attributed to Guardian's proprietary lamination process, ensuring each panel meets the strict performance requirements.

A fibre cement sheet pressure laminated with a sheet of zincaneal using high quality materials.



KEY FEATURES

-  Impact and vandal resistant
-  Performance and high quality attributed to Guardian's proprietary production process
-  Non-combustible
-  Six year warranty
-  Cost effective solution, reduce total resources compared to block or brick work.
-  Product can be fixed to steel or timber framing
-  Customise panel sizes.
Can be cut, drilled and painted prior to dispatch

IDEAL APPLICATIONS

-  Prisons
-  Justice buildings
-  Areas subject to high vandalism
-  Cash security rooms
-  Government and remote housing
-  Police stations
-  Banks

TECHNICAL SPECIFICATIONS

	Sheet Size	Face Sheet (mm)	Zincaneal
Sizing (mm)	2400 x 1200 2700 x 1200 3000 x 1200	Hardieflex 6mm	0.8
		Versilux 6mm & 9mm	1.0
		Villaboard 6mm & 9mm	1.2
			1.5
Options	Single and double sided		
Use	Walls and ceilings		



QBCC Act License No. 15176072